

DALLAS DISTRICT
WILLIAM L. HALE, P.E. DISTRICT ENGINEER

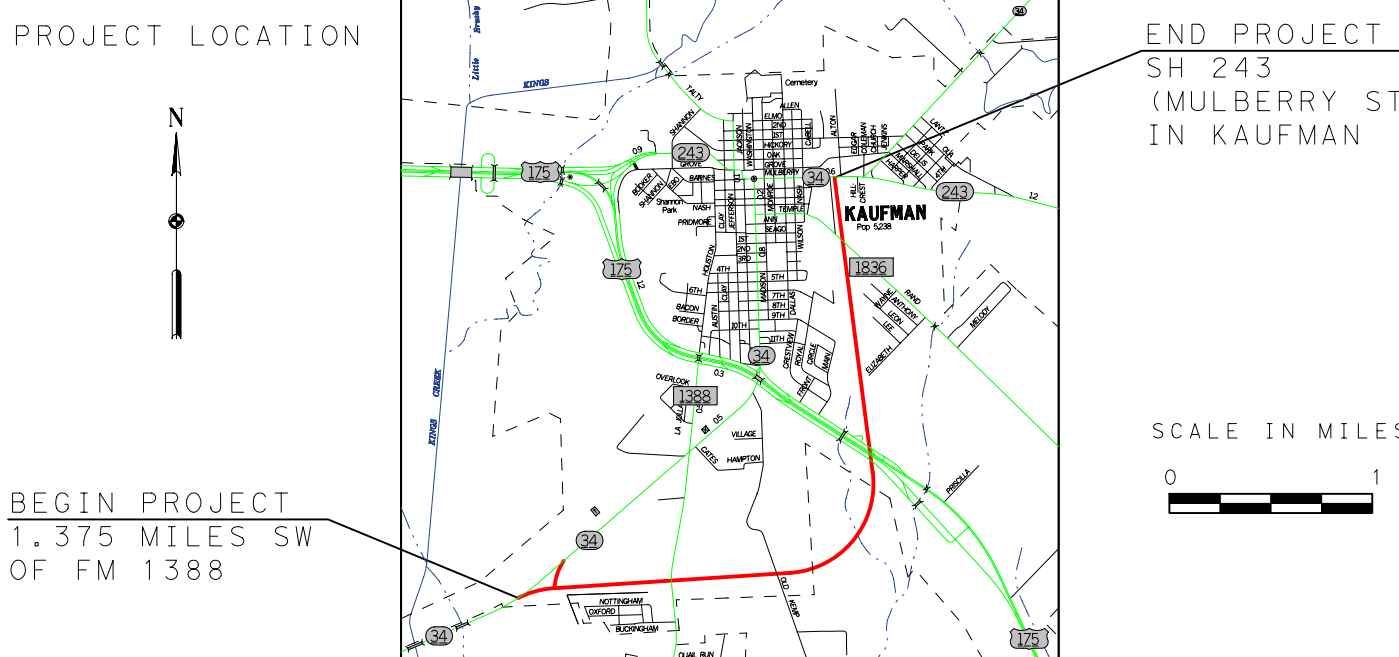
DESIGN SCHEMATIC
KAUFMAN COUNTY

STATE HIGHWAY 34

FROM 1.375 MILES SOUTHWEST OF FM 1388
TO SH 243 (MULBERRY ST.) IN KAUFMAN

CSJ: 0173-03-015

MINOR URBAN ARTERIAL
PROJECT LENGTH = 3.5 MILES
DESIGN SPEED = 45 MPH



PREPARED BY CHIANG, PATEL & YERBY, INC.
UNDER THE SUPERVISION OF:



Chiang, Patel & Yerby, Inc.

KARA K. HUFFMAN, P.E.

SERIAL NO. 88525

DATE: _____

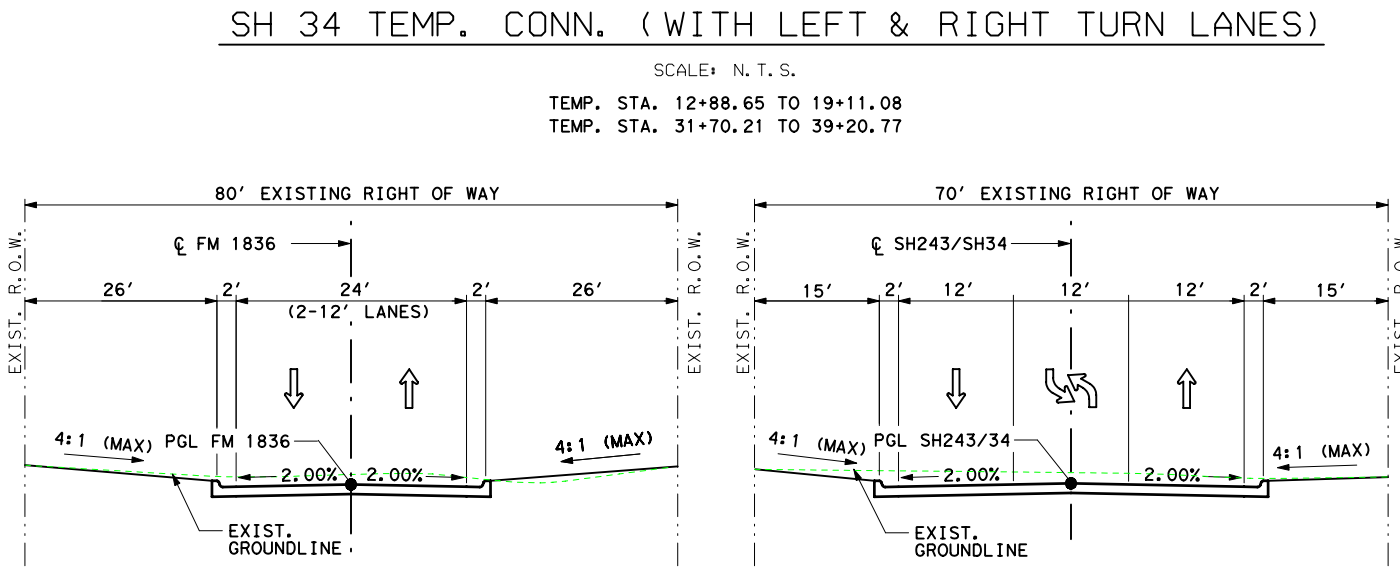
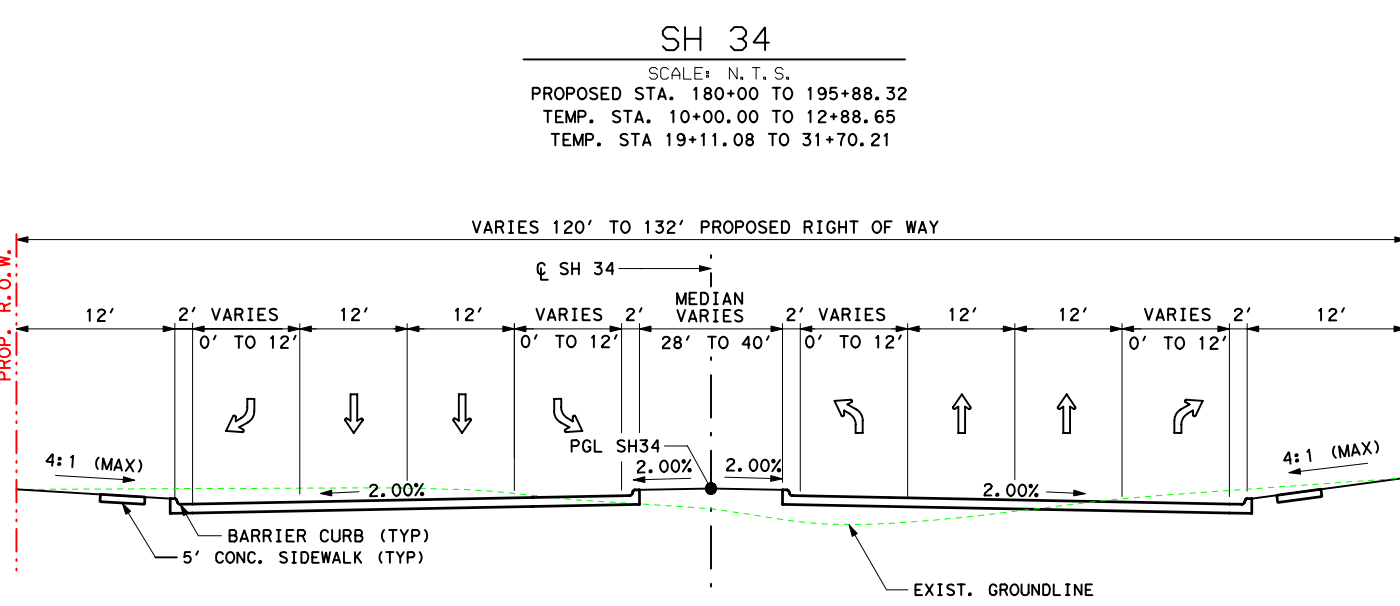
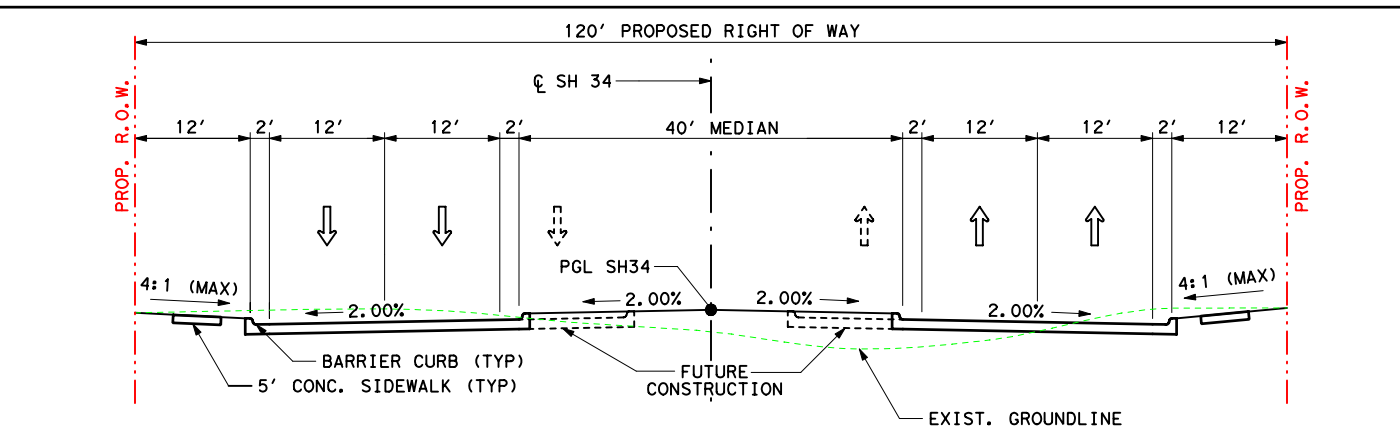


HORIZONTAL FEBRUARY 2006



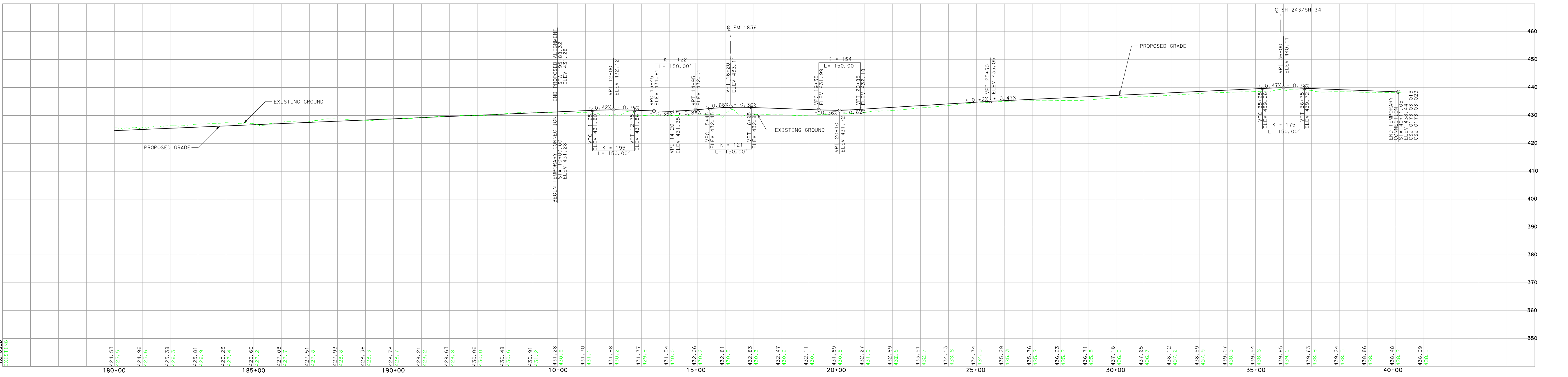
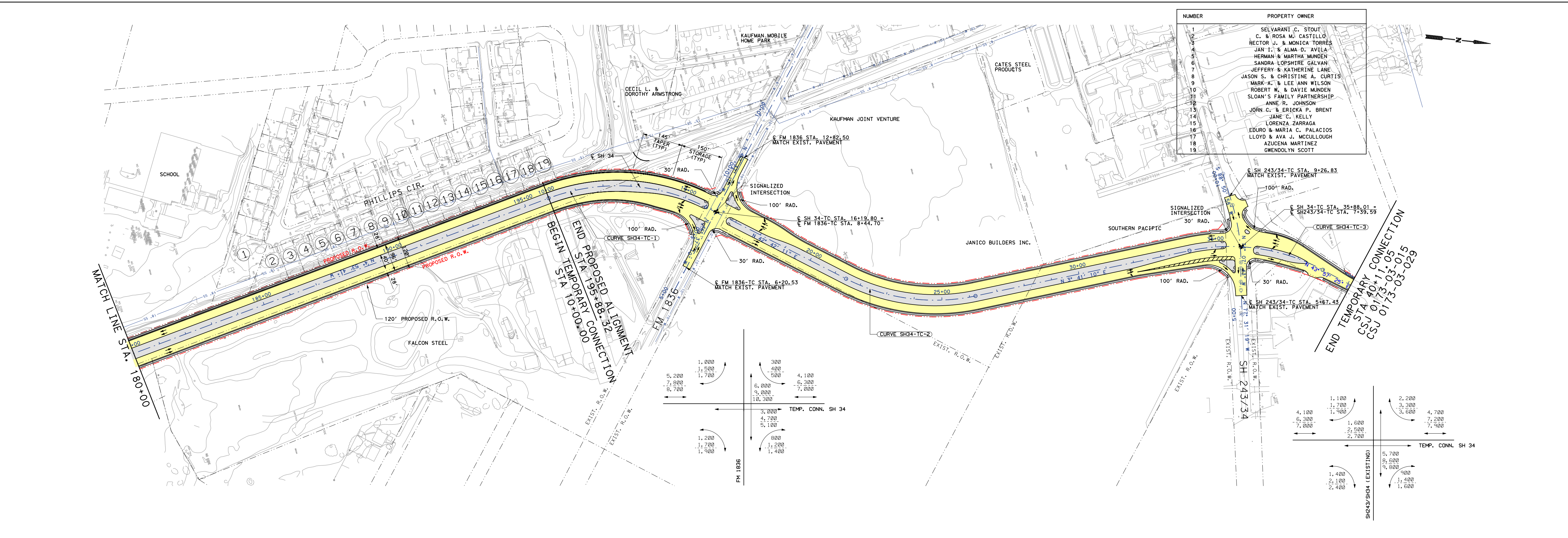
VERTICAL ROLL 7 OF 7

SCALE IN FEET



CURVE NO.	STATION	COORDINATE		BEARING/ DELTA	LENGTH (FT)	TANGENT (FT)	RADIUS (FT)
		N	E				
CL SH 34-TEMP CONN.							
SH34-TC-1	10+00	6902749.44	2645705.78	N 4°53'41.41" W			
	PI	13+08.72	6,903,057.04	47°35'52.41" (RT)	581.52	308.72	700.00
	PT	15+81.52	6903283.909	N 42°42'11.00" E			
SH34-TC-2							
	PC	21+44.66	6,903,697.75	2,646,210.74	N 42°42'11.00" E		
	PI	23+92.66	6,903,880.00	2,646,438.93	39°01'01.03" (LT)	476.68	248.00
	PT	26+21.34	6,904,127.49	2,646,454.88	N 03°41'09.98" E		
SH34-TC-3							
	PC	34+05.07	6,904,909.59	2,646,505.26	N 03°41'09.98" E		
	PI	38+61.32	6,905,165.71	2,645,521.76	40°16'15.14" (RT)	492.00	256.65
	PT	38+97.07	6,905,350.47	2,646,699.91	N 43°57'25.12" E		
CL FM 1836-TC							
	POB	5+00	6,903,075.29	2,646,165.31	N 46°37'10.18" W		
	POE	10+89.52	6,903,479.51	2,645,737.57			
CL EXIST. SH243/SH34-TC							
	POB	5+00	6,905,030.29	2,646,775.90	N 77°31'18.75" W		
243/34-TC-1							
	PC	6+86.41	6,905,075.40	2,646,596.10	N 74°07'42.66" W		
	PI	7+91.17	6,905,104.05	2,646,494.34	17°01'19.41" (LT)	207.96	104.75
	PT	8+94.38	6,905,101.95	2,646,389.61	S 88°50'57.94" W		
	POE	10+11.62	6,905,099.59	2,646,272.38	S 88°50'57.94" W		

- LEGEND:**
- PROPOSED STATE HIGHWAY 34 PAVING (PAVEMENT, DRIVEWAYS, INTERSECTIONS, RAMPS AND CONNECTIONS)
 - PROPOSED STATE HIGHWAY 34 MEDIAN
 - PROPOSED STATE HIGHWAY 34 BRIDGE STRUCTURE
 - PROPOSED ABANDONMENT OF EXISTING PAVEMENTS
 - EXISTING MAJOR STATE HIGHWAY FRONTAGE ROAD OR INTERSTATE
 - EXISTING UTILITIES (APPROX.)
 - EXISTING RIGHT OF WAY (APPROX.)
 - PROPOSED CENTERLINE
- NOTES:**
- EXISTING ROW IS APPROXIMATE AND BASED ON AERIAL PHOTOGRAPHS, TOPOGRAPHICAL INFORMATION, AND ABSTRACT MAPS.
 - DRIVEWAY AND MEDIAN OPENING LOCATIONS TO BE DETERMINED IN PS&E IN COORDINATION WITH THE CITY.
 - DESIGN BASED ON NAD83 COORDINATES
 - THE INFORMATION SHOWN ON THIS DRAWING CONCERNING TYPE AND LOCATION OF EXISTING UTILITIES IS NOT GUARANTEED TO BE ACCURATE OR ALL INCLUSIVE. LOCATIONS OF ALL EXISTING UTILITIES SHOWN ARE APPROXIMATE AND SHOULD BE FIELD VERIFIED PRIOR TO CONSTRUCTION.



DALLAS DISTRICT
WILLIAM L. HALE, P.E. DISTRICT ENGINEER

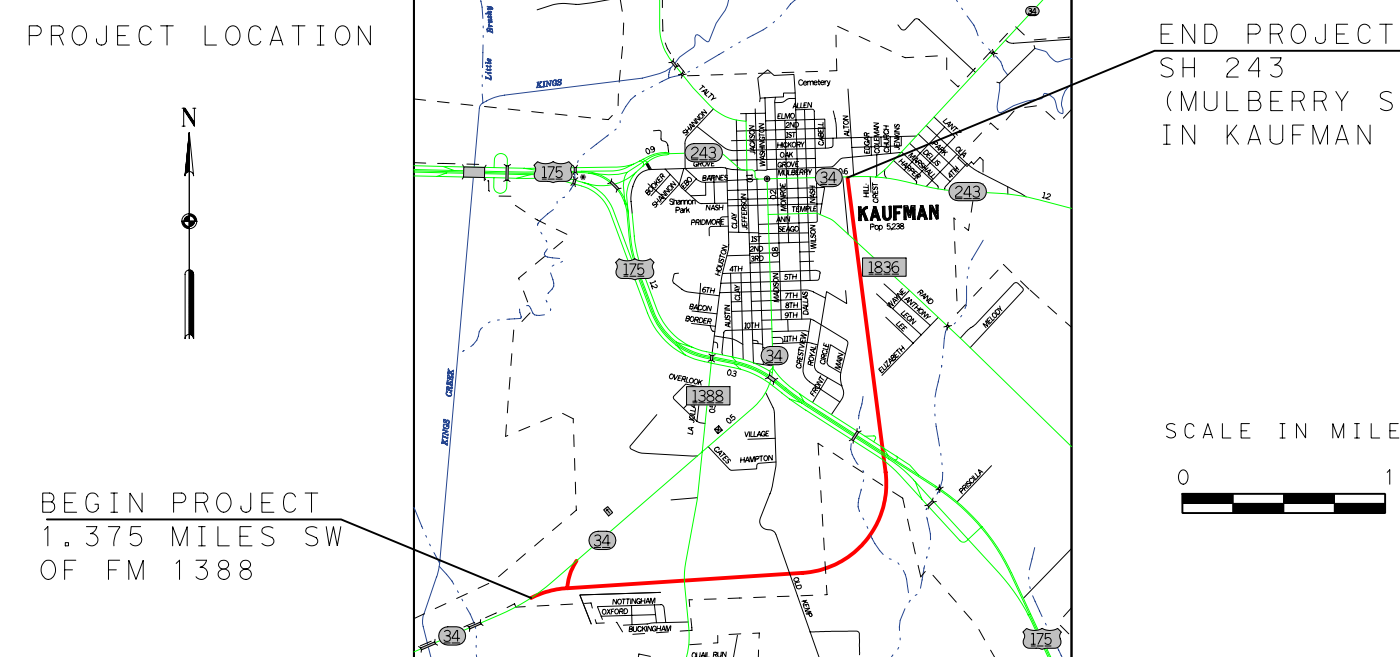
DESIGN SCHEMATIC
KAUFMAN COUNTY

STATE HIGHWAY 34

FROM 1.375 MILES SOUTHWEST OF FM 1388
TO SH 243 (MULBERRY ST.) IN KAUFMAN

CSJ: 0173-03-015

MINOR URBAN ARTERIAL
PROJECT LENGTH = 3.5 MILES
DESIGN SPEED = 45 MPH



PREPARED BY CHIANG, PATEL & YERBY, INC.
UNDER THE SUPERVISION OF:



Chiang, Patel & Yerby, Inc.

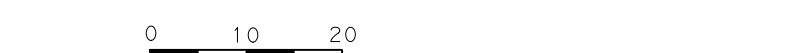
KARA K. HUFFMAN, P.E.

SERIAL NO. 88525

DATE: _____



HORIZONTAL FEBRUARY 2006



VERTICAL ROLL 7 OF 7

SCALE IN FEET