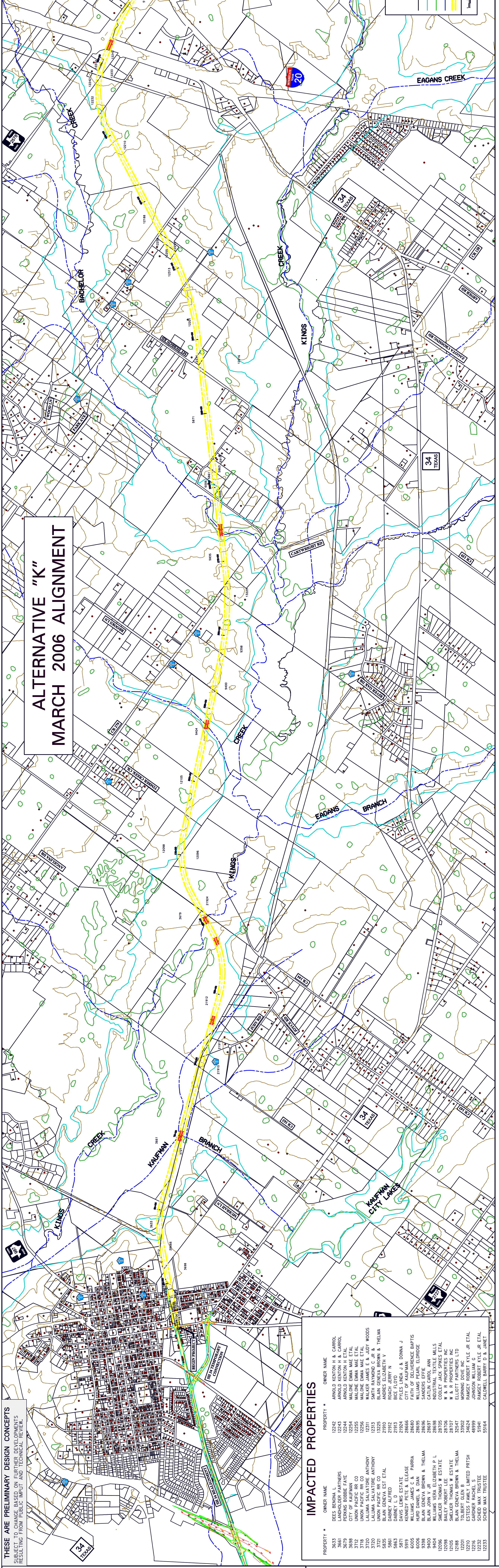


HALFF ASSOCIATES, INC.
 ENGINEERS . SURVEYORS . SCIENTISTS
 PRELIMINARY - FOR INTERIM REVIEW ONLY
 THESE DOCUMENTS ARE FOR INTERIM REVIEW AND NOT INTENDED FOR
 CONSTRUCTION, BIDDING, OR PERMIT PURPOSES. THEY WERE PREPARED BY
 OR UNDER THE SUPERVISION OF:
 DATE: APRIL 2006
 PROJECT NO.: 63910
 TYPE OF PLAN: MAP

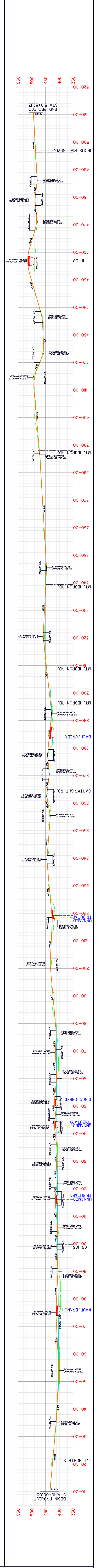


**ALTERNATIVE "K"
 MARCH 2006 ALIGNMENT**

THESE ARE PRELIMINARY DESIGN CONCEPTS
 SUBJECT TO CHANGE BASED ON FURTHER DEVELOPMENTS
 RESULTING FROM PUBLIC INPUT AND TECHNICAL REVIEW.

IMPACTED PROPERTIES

PROPERTY #	OWNER NAME
12242	ARNOLD KENTON H & CAROL
12243	ARNOLD KENTON H & CAROL
12244	ARNOLD KENTON H & CAROL
12254	PERKINS BOBBIE FAYE
12255	WALONE EMMA MAE ETAL
12256	WALONE EMMA MAE ETAL
12257	WALONE EMMA MAE ETAL
12258	WALONE EMMA MAE ETAL
12259	WALONE EMMA MAE ETAL
12260	WALONE EMMA MAE ETAL
12261	WALONE EMMA MAE ETAL
12262	WALONE EMMA MAE ETAL
12263	WALONE EMMA MAE ETAL
12264	WALONE EMMA MAE ETAL
12265	WALONE EMMA MAE ETAL
12266	WALONE EMMA MAE ETAL
12267	WALONE EMMA MAE ETAL
12268	WALONE EMMA MAE ETAL
12269	WALONE EMMA MAE ETAL
12270	WALONE EMMA MAE ETAL
12271	WALONE EMMA MAE ETAL
12272	WALONE EMMA MAE ETAL
12273	WALONE EMMA MAE ETAL
12274	WALONE EMMA MAE ETAL
12275	WALONE EMMA MAE ETAL
12276	WALONE EMMA MAE ETAL
12277	WALONE EMMA MAE ETAL
12278	WALONE EMMA MAE ETAL
12279	WALONE EMMA MAE ETAL
12280	WALONE EMMA MAE ETAL
12281	WALONE EMMA MAE ETAL
12282	WALONE EMMA MAE ETAL
12283	WALONE EMMA MAE ETAL
12284	WALONE EMMA MAE ETAL
12285	WALONE EMMA MAE ETAL
12286	WALONE EMMA MAE ETAL
12287	WALONE EMMA MAE ETAL
12288	WALONE EMMA MAE ETAL
12289	WALONE EMMA MAE ETAL
12290	WALONE EMMA MAE ETAL
12291	WALONE EMMA MAE ETAL
12292	WALONE EMMA MAE ETAL
12293	WALONE EMMA MAE ETAL
12294	WALONE EMMA MAE ETAL
12295	WALONE EMMA MAE ETAL
12296	WALONE EMMA MAE ETAL
12297	WALONE EMMA MAE ETAL
12298	WALONE EMMA MAE ETAL
12299	WALONE EMMA MAE ETAL
12300	WALONE EMMA MAE ETAL
12301	WALONE EMMA MAE ETAL
12302	WALONE EMMA MAE ETAL
12303	WALONE EMMA MAE ETAL
12304	WALONE EMMA MAE ETAL
12305	WALONE EMMA MAE ETAL
12306	WALONE EMMA MAE ETAL
12307	WALONE EMMA MAE ETAL
12308	WALONE EMMA MAE ETAL
12309	WALONE EMMA MAE ETAL
12310	WALONE EMMA MAE ETAL
12311	WALONE EMMA MAE ETAL
12312	WALONE EMMA MAE ETAL
12313	WALONE EMMA MAE ETAL
12314	WALONE EMMA MAE ETAL
12315	WALONE EMMA MAE ETAL
12316	WALONE EMMA MAE ETAL
12317	WALONE EMMA MAE ETAL
12318	WALONE EMMA MAE ETAL
12319	WALONE EMMA MAE ETAL
12320	WALONE EMMA MAE ETAL
12321	WALONE EMMA MAE ETAL
12322	WALONE EMMA MAE ETAL
12323	WALONE EMMA MAE ETAL



HALFF ASSOCIATES, INC.
 PLANNERS . LANDSCAPE ARCHITECTS . ENGINEERS . SCIENTISTS . SURVEYORS

DESIGN	DRAWN	DATE	SCALE	NOTES	FILE	NO.
HALFF	JWM	APRIL 2006	1" = 600'	22015 W010	015-10-MASTRIPMAP-K	6B OF 6

"K" MARCH 2006 ALIGNMENT
 SH 34
 TEXAS DEPARTMENT OF TRANSPORTATION
 DALLAS, TEXAS